

GENERAL TOLERANCES UNLESS SPECIFIED

X +/-0.50 X.X +/-0.25 X.XX +/-0.1 X +/-1° X.X +/-0.5°

UNLESS SPECIFIED IN CONTRACT ALL WELDS MUST BE PRODUCED BY QUALIFIED WELDERS TO BS EN287-1: 2004 - WELDING SYMBOLS TO BS499-2: 1980 UNLESS SPECIFIED ALL TOLERANCES SHOWN ARE AFTER FINISHING TREATMENTS / PROCESS ARE APPLIED

FLATNESS & SQUARE TOLERANCES:

M/C +/-0.2

FABRICATION: +/-1

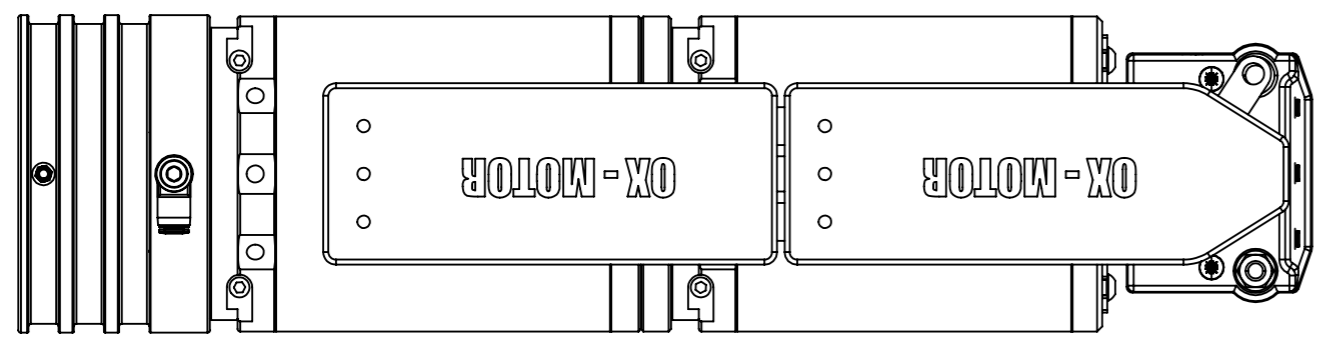
REV. A

DATE 21/06/2022

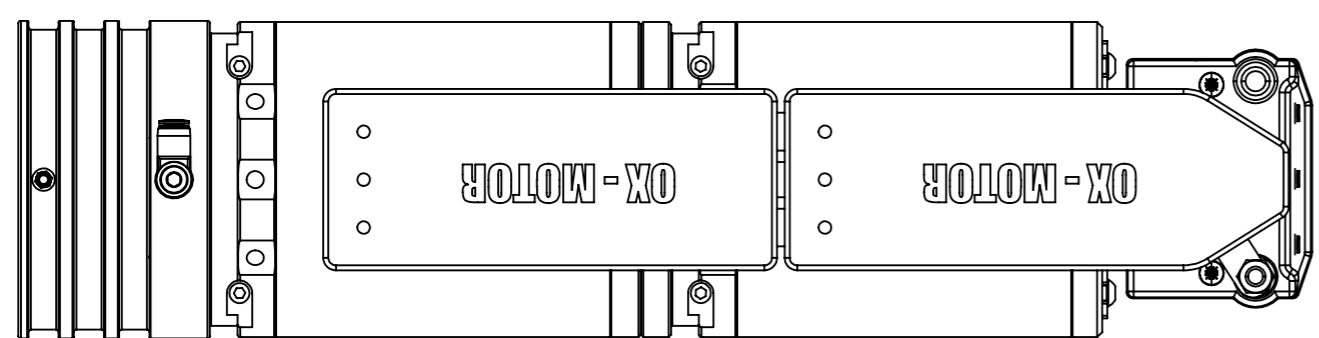
DESCRIPTION FIRST ISSUE

SIG NJ

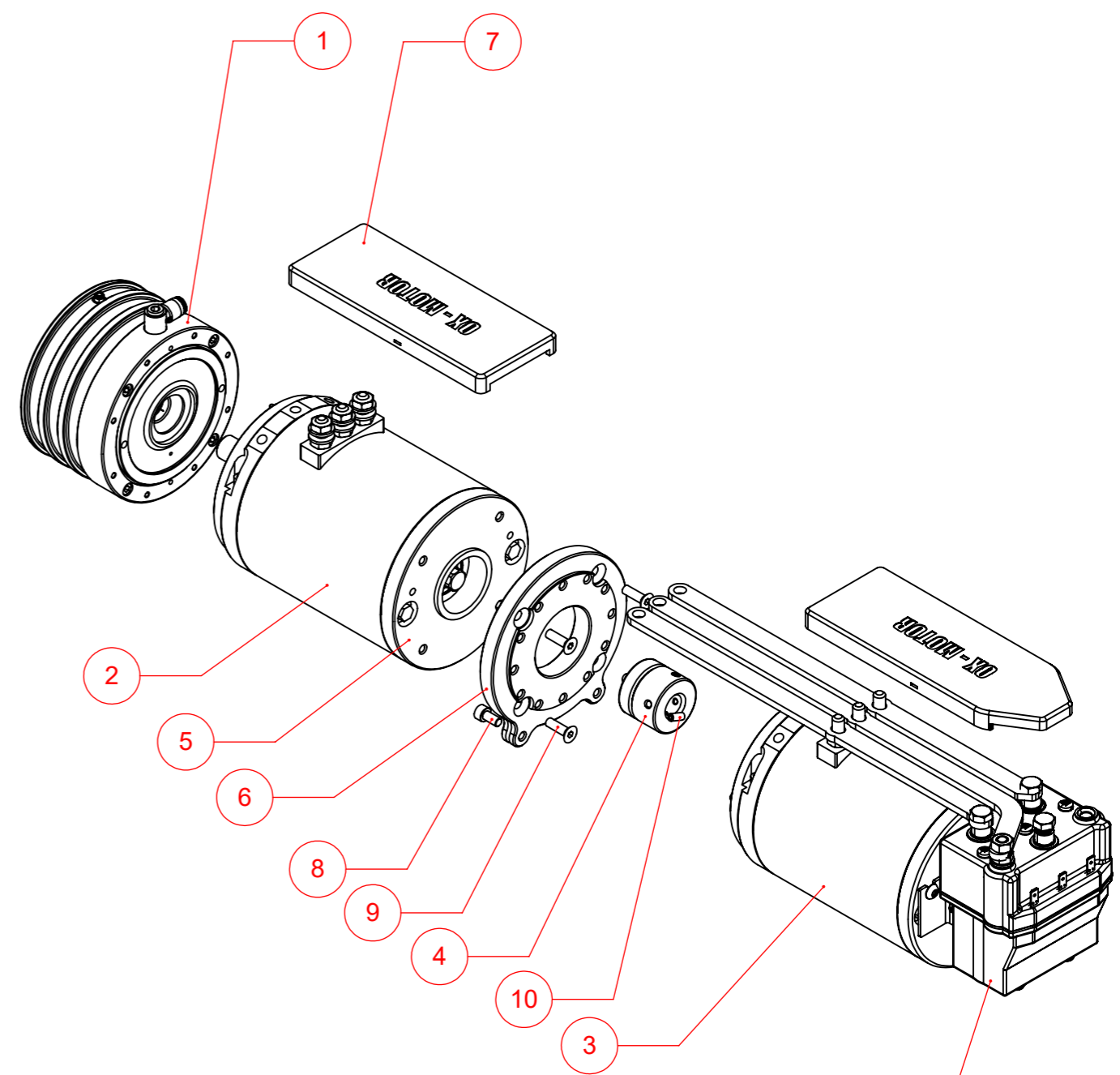
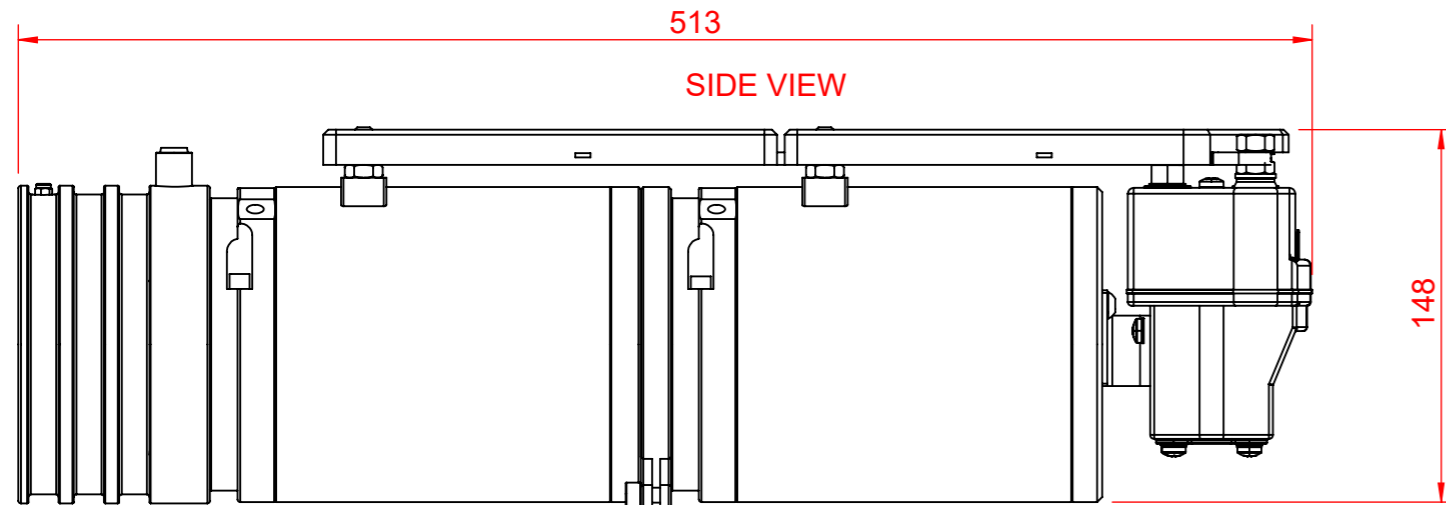
ITEM NO.	PART / DRG NUMBER	DESCRIPTION	QTY.
1	ABU-MA-01	SINGLE MOTOR BRAKE ASSEMBLY	1
2	RWM-MA-01	OX MOTOR ASSEMBLY	1
3	RWM-MA-03	OX MOTOR ASSEMBLY	1
4	RWM-MF-01	DRIVE COLLAR ASSY - QUAD	1
5	RWM-MD-24	MOTOR END PLATE ADAPTER	1
6	RWM-MD-21	TWIN MOTOR - ADAPTER PLATE	1
7	RWM-MD-15Q	BUS BAR COVER - OX MOTOR WITH DC182P	1
8	M6 x 12	M6 x 12 SKT CP HEAD	2
9	M6 x 20	M6 x 20 C/SNK SKT HD	4
10	M5 x 12	M5 x 12 GRUB SCREW	4



RH SETUP



LH SETUP



DC182P SHOWN

UNLESS SPECIFIED	
FASTENER	TORQUE
M3	1.5 Nm
M4	3.5 Nm
M5	6 Nm
M6	7 Nm
M8	20 Nm
M10	45 Nm
M12	80 Nm
M16	160 Nm
M20	200 Nm

Red Winches
www.red-winches.com
email: sales@red-winches.com

DRAWN: NJ, CHECKED: NB, DATE: 21/06/2022

DRAWING DESCRIPTION: QUAD OX MOTOR ASSEMBLY LH

MATERIAL: SEE DETAIL DRAWINGS
FINISH: SEE DETAIL DRAWINGS

DRAWING NUMBER: RWM-GA-01

SCALE: 1:3, REVISION: A, SHT 1 OF 1

Drawing not to be reproduced or distributed in any form without specific permission from Red Winches Ltd